

2019  
The Korea Association of Art & Design  
**International  
Art & Design  
Invitation  
Exhibition**  
Thailand Burapha University

2019  
(사)한국조형디자인협회  
태국 부라파대학교 예술대학  
국제조형디자인전



(사)한국조형디자인협회 The Korea Association of Art & Design  
태국 부라파대학교 예술대학 Faculty of Fine and Applied Arts, Burapha University, Thailand

Exhibition Hall, Burapha University in Thailand  
태국 부라파대학교 예술대학 전시장 2019.02.11~15



2019  
**International  
Art & Design  
Invitation Exhibition**  
Thailand Burapha University

2019.02.11~15

같거나, 다르거나  
Similarity and Difference

The Korea Association of Art & Design  
Faculty of Fine and Applied Arts, Burapha University, Thailand



**2019**  
THE KOREA ASSOCIATION  
OF ART&DESIGN

**INTERNATIONAL  
ART&DESIGN  
INVITATION EXHIBITION**

---

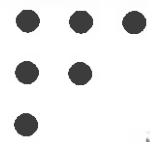
THAILAND BURAPHA UNIVERSITY

---

**2019 국제조형디자인초대전**  
- 태국 Burapha University -

**2019. 02. 11 ~ 02. 15**  
태국 Burapha University 예술대학 전시장





# CONTENTS

04 Greeting

09 Domestic

39 International



## 2019 국제조형디자인초대전

태국 Burapha University

# 인사말

태국 연구자 및 한국조형디자인협회 회원 여러분

안녕하세요. 이사장 김정석입니다.

이번 전시 및 워크샵은 저희 한국조형디자인 협회의 2019년 첫 행사라는 점에서 더욱 의미가 있다고 생각합니다.

잠시 2018년을 뒤돌아보면 저희 협회가 내실을 키우는 한 해였다고 감히 말씀드릴 수 있으며 많은 이사님들과 회원 분들의 노력과 열정으로 이뤄낸 결과라고 생각합니다. 2018년 한 해 동안 저희 협회에서 가장 큰 경사는 등재지 유지 심사에서 높은 점수로 등재지유지 판정을 받은 일이라 할 수 있습니다. 이를 위해 편집위원장 이하 편집위원들과 TF구성원 분들께서 정말 많은 수고를 해 주셨습니다. 아울러 저희 협회에서 4회 발간한 등재지 '조형디자인 연구'는 인터넷으로 업무를 진행하는 시스템을 구축하여 편리하고 공정한 투고와 심사가 이뤄지는 체계를 확립하였습니다. 고무적인 것은 등재지 난립과 전공자 감소 등의 어려움이 가중되고 있는 상황에도 투고자가 계속 증가하고 있다는 점과(2018, 겨울 호 투고자 33명) 공예, 디자인 분야에서 활발히 활동하시는 연구자와 작가 분들이 꾸준히 회원으로(2018, 신규 회원 80여명) 가입해 주신 점이라 할 수 있습니다.

다음으로, 2018년 10월 서울대학교에서 진행한 학술대회와 전시가 참여 인원의 증가 뿐 아니라 내용적인 면에

서도 발전이 있었다는 점입니다. 저희가 진행한 학술대회 중 처음으로 대학(원)생을 대상으로 한 논문 및 전시 공모를 진행하여 젊고 유능한 작가와 연구자들의 참여를 이끌어 내었습니다. 특히 실물전을 진행함으로써 이미지 전시가 갖는 한계를 보완하고 공예와 디자인 분야의 창작의욕을 높이고자 하였습니다. 2018년 2월에 있었던 태국에서의 전시, 학술대회는 개인전과 협회전에 150여명의 국내외 연구자들이 참여하는 등 협회의 국제화와 교류확대에 큰 기여를 하였습니다.

이번 전시 참여 작가는 134명으로 2018년 전시에 비해 조금 줄었지만 유리, 도자, 디자인 분야에서 진행되는 워크샵을 통해 보다 내실 있는 학술 교류가 이뤄질 수 있을 것으로 기대합니다. 올해에도 저희 협회는 회원 여러분들의 학술연구, 창작 활동을 지원하고 회원 간의 친목 도모를 위해 더욱 노력 할 것을 약속드리며 한국과 태국의 창작분야의 교류와 발전을 위해서도 더욱 관심을 갖고 확대해 가도록 하겠습니다.

끝으로, 한국조형디자인 협회와 태국 및 해외 연구자들과 지속적인 교류와 전시가 이뤄지도록 힘써주시는 석산 톤야 피롬(Sakesan Tonyapirom) 예술대 학장님, 서미영 교수님과 원활한 전시와 워크샵이 진행될 수 있도록 아낌없는 지원을 해주신 부라파 대학에 감사드립니다.

한국 조형디자인협회 이사장  
김정석

## 2019 International Art&Design Invitation Exhibition

Thailand Burapha University

# Greeting

Dear Thai researchers and members of The Korea Association of Art & Design,

Hello, I am the Chief Director, Kim, Jung-suk

I think that this exhibition & workshop are more meaningful as the first event in 2019 of The Korea Association of Art & Design.

Looking back on 2018 for a moment, it was a year for our association to ensure the internal stability, and this result was achieved by great efforts and passion of many directors and members. The greatest matter of our association in 2018 must be receiving the judgment to maintain the status of journal with high score in the screening for the maintenance of journal. The chairman, editorial staffs, and members of TF put so much effort into this matter. Moreover, the journal 'Formative Design Research' published four times by our association has established the system for the convenient and fair submission and screening through the internet-based working system. Even under the tough situations like too many journals and decrease of majors, what is encouraging is the continuous increase of contributors(33 contributors for the winter edition of 2018) and the continuous membership of researchers and artists actively working in the crafts & design area(about 80 new members in 2018).

Next, the symposium and exhibition held in Seoul National University in October 2018 has achieved the development in the aspect of contents and the increase of participants. By conducting the thesis & exhibition

contest targeting university students and graduate students for the first time out of our symposiums, we have drawn the participation of young and competent artists and researchers. Especially, through the real object exhibition, we aimed to complement the limitations of image exhibition and also to increase the will to create in the crafts & design area. The exhibition and symposium held in Thailand in February 2018 largely contributed to the globalization of our association and the expansion of exchanges as around 150 domestic and foreign researchers participated in the private exhibition and association exhibition.

Total 134 artists would be participating in this exhibition, which was a bit decreased than the one in 2018. However, through the workshops in the glass, pottery, and design area, the academic exchanges would get more internally-stabled. This year, our association would promise to put more efforts to support the academic researches and creative activities of our members, and also to promote friendship between members. We will have more interest in the exchange and development of creation area between Korea and Thailand.

Lastly, I like to thank The Korea Association of Art & Design, Thai & foreign researchers, Sakesan Tonyapirom, the dean of College of Arts for hard work for continuous exchange and exhibition, Prof. Seo, Mi-Young, and Burapha University for endless support for the smooth exhibition and workshop.

The Chief Director of The Korea Association of Art & Design  
Jung Suk, Kim

นิทรรศการศิลปะและการออกแบบนานาชาติ 2562

มหาวิทยาลัยบูรพา ประเทศไทย

## สารจากคณบดีคณะศิลปกรรมศาสตร์ มหาวิทยาลัยบูรพา

กระผมรู้สึกเป็นเกียรติอย่างยิ่งที่จะขอเรียนเชิญท่านเข้าร่วมนิทรรศการ “2019 The Korea Association of Art & Design International Art & Design Exhibition <Thailand Burapha University>” ที่จัดขึ้น ณ คณะศิลปกรรมศาสตร์ มหาวิทยาลัยบูรพา

คณะศิลปกรรมศาสตร์มีหน้าที่รับผิดชอบโดยตรงเพื่อให้บรรลุเป้าหมายในการบูรณาการ

พัฒนาและขยายความร่วมมือและการเชื่อมโยงกับหน่วยงานและเครือข่ายที่เกี่ยวข้องกับศิลปะและการออกแบบ

ในฐานะที่เป็นคณบดีคณะศิลปกรรมศาสตร์ ผมตระหนักถึงความสำคัญของการส่งเสริมให้เกิดความเชื่อมโยงระหว่างศิลปินไทยกับศิลปินนานาชาติ

การจัดงานนิทรรศการ “2019 The Korea Association of Art & Design International Art & Design Exhibition

<Thailand Burapha University>” ถือเป็นโครงการสำคัญที่จัดขึ้นมาเพื่อส่งเสริมความร่วมมือระหว่างคณะศิลปกรรมศาสตร์

มหาวิทยาลัยบูรพากับเครือข่ายศิลปินนานาชาติ และเป็นการเผยแพร่ความรู้ที่เกี่ยวข้องทางด้านศิลปะและการออกแบบ

ในนามของคณะศิลปกรรมศาสตร์ มหาวิทยาลัยบูรพา กระผมขอขอบคุณสมาคมศิลปะและการออกแบบแห่งประเทศไทย (KAAD)

และศิลปินทุกท่านที่ร่วมกันทำให้กิจกรรมครั้งนี้สำเร็จลุล่วงด้วยดี กระผมหวังเป็นอย่างยิ่งว่า นิทรรศการ “2019 The

Korea Association of Art & Design International Art & Design Exhibition <Thailand Burapha University>”

จะเป็นส่วนผลักดันให้ความร่วมมือระหว่างคณะศิลปกรรมศาสตร์ มหาวิทยาลัยบูรพาและสมาคมศิลปะและการออกแบบแห่งประเทศไทย (KAAD)

พัฒนายิ่งขึ้นไป รวมทั้งศิลปินและนักออกแบบได้รับประโยชน์จากโครงการนิทรรศการศิลปะและการออกแบบในครั้งนี้

รองศาสตราจารย์เสกสรรค์ ตันยาภิรมย์

คณบดีคณะศิลปกรรมศาสตร์ มหาวิทยาลัยบูรพา

2019 International Art&Design Invitation Exhibition

Thailand Burapha University

## Message from Dean of the Faculty of Fine and Applied Arts, Burapha University

It gives me a great pleasure to invite you to “2019 The Korea Association of Art & Design International Art & Design Exhibition <Thailand Burapha University>” which will be held in Faculty of Fine and Applied Arts, Burapha University.

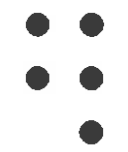
Faculty of Fine and Applied Arts in charge of moving the arts and design strategy forward to achieve the target through the accumulation, creation, integration, development and expand cooperation and networking between various parties. As Dean of the Faculty of Fine and Applied Arts, I'm realize the importance of promoting the connection between Thai and International artists. Organizing the “2019 The Korea Association of Art & Design International Art & Design Exhibition <Thailand Burapha University>” is a key event established to promote cooperation and relationship between Faculty of Fine and Applied Arts, Burapha University and

International artist network. And spread awareness and knowledge about art and design.

On behalf of Faculty of Fine and Applied Arts, Burapha University, I would like to thank Korea Association of Art & Design and artists that have supported the exhibition until successfully completing their mission. I sincerely hope that the “2019 The Korea Association of Art & Design International Art & Design Exhibition <Thailand Burapha University>” will be supported in order to drive forward cooperation between Faculty of Fine and Applied Arts, Burapha University and Korea Association of Art & Design (KAAD) and I hope that the exhibition will encourage artists and designers to enter and benefit from art and design exhibition projects.

Assoc. Prof. Sakesan Tonyapirom

Dean of the Faculty of Fine and Applied Arts, Burapha University



# Domestic

- |                 |                   |                  |
|-----------------|-------------------|------------------|
| Bo Hyung, Koh   | Sang Oh, Park     | Jung Shin, Lee   |
| A Min, Ku       | Soung Chuel, Park | Hong Ja, Lee     |
| Tae Yun, Kil    | So Hyoung, Park   | Hi Jung, Lee     |
| Kwang Roul, Kim | Soo Hyun, Park    | Se Jin, Jeong    |
| Sun Jin, Kim    | Jung Gun, Park    | Kyoung Hee, Cho  |
| Sung hee, Kim   | Mi Young, Seo     | Sung Ho, Cho     |
| Soo yeun, Kim   | Mi Young, Shin    | Yu Jin, Cho      |
| Soo Jung, Kim   | Ki Hyun, Ryu      | Soon Young, Choi |
| Un Bae, Kim     | Seong Ho, Yoon    | Eung Han, Choi   |
| Yong, Kim       | Kwang Jin, Lee    | Im Jung, Choi    |
| Woon Kon, Kim   | Kyu Nam, Yi       | Ju Yeon, Choi    |
| Jang Ryong, Kim | Dong Hun, Lee     | Ji Young, Choi   |
| Jung Suk, Kim   | Sang Ill, Lee     | Hye Sook, Choi   |
| Joon Yong, kim  | Sook Hyun, Lee    | Joong Jae, Tak   |
| Hyun Suk, Kim   | Seel Ku, Lee      | Sung Hlyun, Hong |
| Hyoung, Kim     | Young Ha, Lee     | Ji Youn, Hong    |
| Hyung Jong, Kim | Eun. Lee          | Jin Kyung, Hwang |
| Hwa Un, Kim     | Jeom Chan, Lee    |                  |
| In Soon, Mo     | Jung Soo, Lee     |                  |



Bo Hyung, Koh 고보형



Nationality  
Republic of Korea

Institute  
Hanyang University

Profile

- Associate professor Colleg of Design Dept. of Technoproduct design
- 2000 Akademie der bildenden Kuenste in Nuernberg Germany
- 1992 Hongik Graduate School of Industrial Art, Seoul, Korea (MFA)
- 1989 Hongik University, Metal Craft, Seoul, Korea (BFA) Award
- '2006 Bayerischer Staatspreis', Germany



빛과 소금 (Light and salt) 45x25x2.5

Tae Yun, Kil 김태운

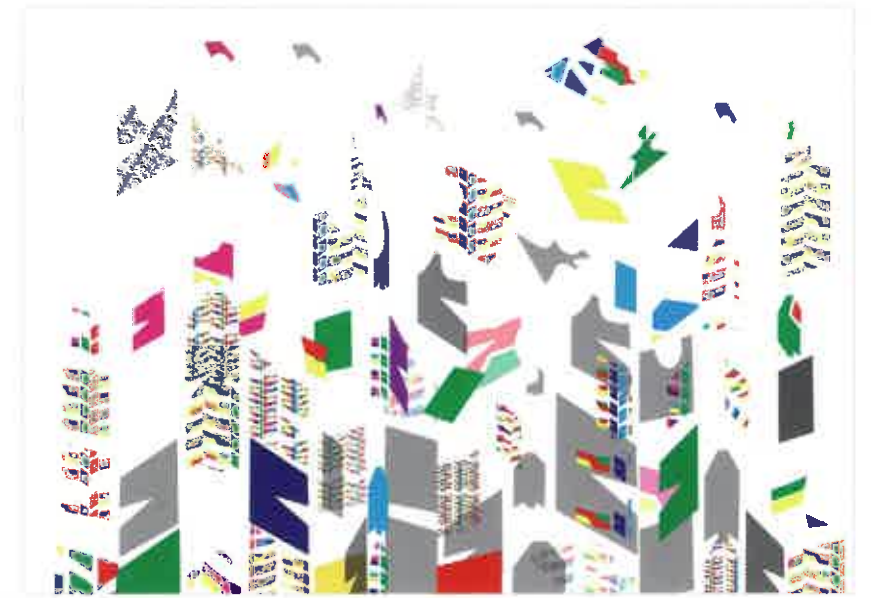


Nationality  
Republic of Korea

Institute  
Catholic University

Profile

- Professor/ Dept. of fashion design at Catholic Univ. of Daegu
- A president prize of minister of commerce, industry & energy of korea
- Industrial design exhibition
- Grand prize of chung ju artistic craft culture products competition
- Chairman prize of the korea textile design association



2019 Tire 91x110



눈을 감으면 III (When I close my eyes, III) 100x140x15

A Min, Ku 구아민



Nationality  
Republic of Korea

Institute  
Chung-Ang University

Profile

- Ph.D candidate, Chung-Ang University
- B.F.A., M.F.A. Ewha Womans University (fiber art)
- Solo exhibition and group exhibitions
- Excellence prize, 11th Haengju Craft & Design Contest



단짝 (Lover) 0.7x4x4

Kwang Roul, Kim 김광렬

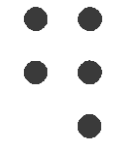


Nationality  
Republic of Korea

Institute  
Hyupsung University

Profile

- Professor of Life Space Design. The Hyupsung University
- Members of the Korean Crafts Association.
- Members of the Korean Furniture Design Association
- Member of the Honglim Society
- Seven solo exhibitions



# International

- |                                    |                               |                          |
|------------------------------------|-------------------------------|--------------------------|
| Abhisit Purasachit                 | Kunyawee Phetsuk              | Ramita Kittaweeyotin     |
| Alongkot Pethrsisuk                | Lue.Kasamakamin Bhumitadadech | Ravitep Musikapan        |
| Apiwat Sornsakda                   | Montita Phrammanachot         | Rongkakorn Anantasanta   |
| Aran Wanichakorn                   | Naddawadee Boonyadacho        | Safa Tharib              |
| Arkorn Chongphaisal                | Nantiya Na nongkai            | Sakesan Tonyapirom       |
| Bunchoo Bunlikhitsiri              | Napon Kunanitisarn            | Sasirada Phanvisetsak    |
| Chanathinat Chaiyapoo              | Nattakamol Toongsuwan         | Shin, Juyoung Annie      |
| Chaninthorn Chayussamee            | Nattapon Pichairat            | Sittisak Rattanaprapawan |
| Chatchai Duangsupa                 | Nattarika Kongsaku            | Sonthaya Yuakjangreed    |
| Chaveeporn Sungwarn                | Nattheeranon Rodchuen         | Soontaree Chaleawpong    |
| Chumnong Thanavanichagul           | Paithoon Thongdee             | Suradet Teerakul         |
| Chutima Changpum                   | Panuwat Sangiam               | Surapol Tanasootr        |
| Dawan Madlee                       | Panuwat Sitheechoke           | Suriya Rattanawongul     |
| Federico D'Orazio                  | Papattaranan Kunphunsup       | Suwadee Pradab           |
| Isara Singtokaew                   | Pasakon Sangsawang            | Suwapet Sowapark         |
| Jutakanok Pethrsisuk               | Pasin Viengkaew               | Suwatchai Chaiyaphan     |
| Kajomrit Sirimark                  | Patana Duangpatra             | Teerayut Pengchai        |
| Kamolwan Patcharapornpipat Sarasuk | Pattarasak Simhong            | Teparit Chaiyajan        |
| Kamonsiri Wongmuek                 | Peerapong Sutinrerk           | Thakorn Prathompongsonon |
| Kanittha Puangsri                  | Petronio Bendito              | Thanapon Junkasain       |
| Kanyaporn Kunthonsap               | Phikkanet Isaramongkolrak     | Theerayu Srethapakdi     |
| Kanyakorn Chanarasakha             | Pisit Klangkool               | Thidarat chumjungreed    |
| Khan Payungphan                    | Pitsamai Anwakulpanich        | Thitaporn Wanphet        |
| Kim, Hyungjoo a.                   | Pornpimon Sakda               | Tippaluk Komolvanij      |
| Kitti Maleephan                    | Porntip Prayutte              | Wanchalem Promsom        |
| Kittithat Srifar                   | Poyluang Bunjaroen            | Warakorn Chaitiamvong    |
| Koraklod Kumsook                   | Prasitchai Jirapasittinon     | Weeraphat Suteerangkul   |
| Kriangkrai Kongkhanun              | Pratana Jirapasittinon        | Wichai Yothawong         |
| Kriangsak Khiaomang                | Premwadee Vinijchayakul       | Worachai Roubroumlert    |
| Kritsada Sangseubchart             | Racha Thongphak               | Yuwadee Thong-on         |





Abhisit Purasachit



Nationality

Thailand

Institute

Sripatum University

Profile

- Lecturer at School of Digital Media, Sripatum University



Mind heist 59.4x84

Apiwat Sornsakda



Nationality

Thailand

Institute

Phuket Rajabhat University

Profile

- Head of product design Department
- Product design lecturer
- Consultant of Thai local product design in Southern area
- The Winner of water painting and invention award IVOR 2018
- Lecturer of One Tambon (meaning sub-district) One Product in Southern area



The Invis Pot  
Body 20, Full Body 42.5x20x38.5



Deuan Yi | Boon Khoon Laan (Merit in January) 140x23.7

Alongkot Pethrsisuk



Nationality

Thailand

Institute

Surindra Rajabhat University

Profile

- Instructors in Visual Art and Design Program



Thai Traditional Medicine Art

Aran Wanichakorn



Nationality

Thailand

Institute

Srinakharinwirot University

Profile

- Assistant Professor, CCI College Creative Industry, Srinakharinwirot University.

Arkorn Chongphaisal

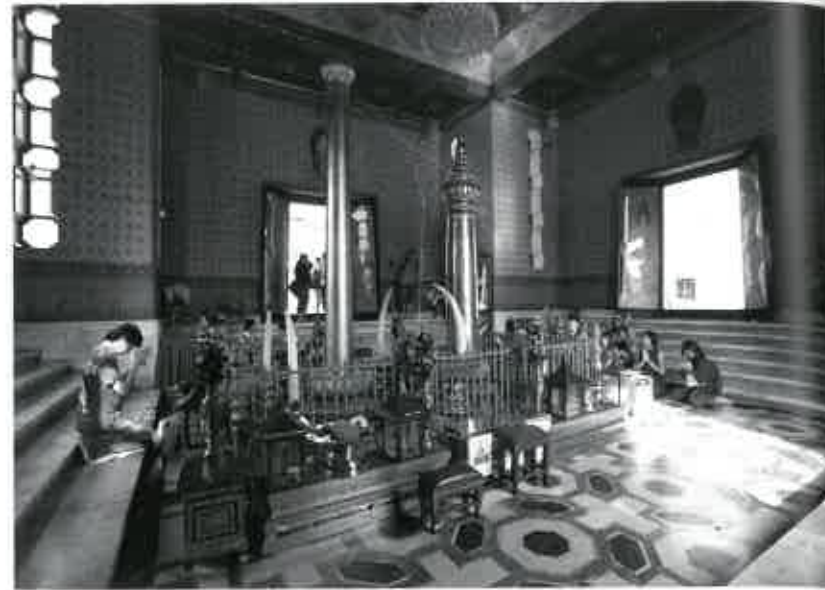


Nationality  
Thailand

Institute  
Sripatum University

Profile

- Lecturer at School of Digital Media, Sripatum University



Faith 40x90

Chanathinat Chaiyapoo



Nationality  
Thailand

Institute  
Phuket Rajabhat University

Profile

- Assistant Dean, Faculty of Science and Technology, Phuket Rajabhat University.
- Lecturer in Product Design Department, Faculty of Science and Technology, Phuket Rajabhat University.
- 2017-2018, Designer in Product processing and Development to Market Project By The Queen's Sirikit Department of Sericulture, Ministry of Agriculture.



Leaves around 45x15



Red and White Building Ang-Sila

Bunchoo Bunlikhitsiri



Nationality  
Thailand

Institute  
Burapha University

Profile

- Lecturer



Desire 2019 29.7x42

Chaninthorn Chayrussamee



Nationality  
Thailand

Institute  
Sripatum University

Profile

- Lecturer at School of Digital Media, Sripatum University

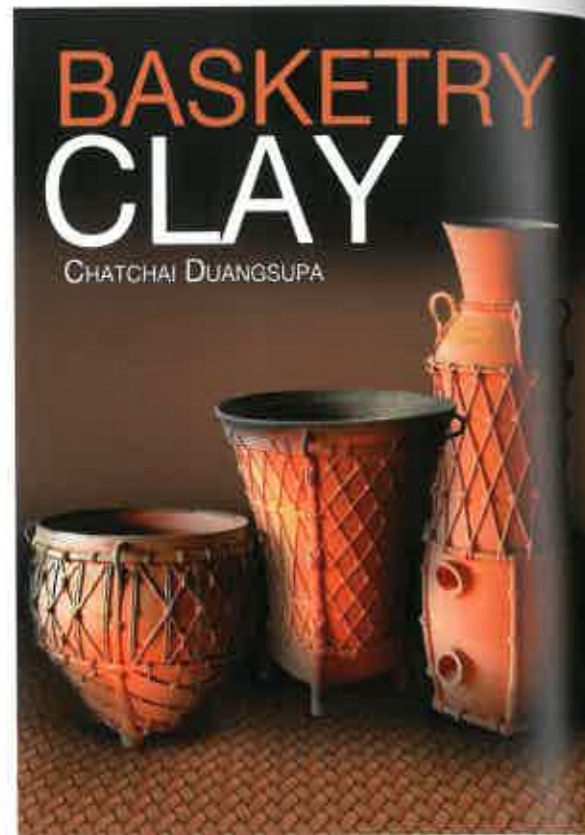
Chatchai Duangsupa



Nationality  
Thailand

Institute  
Rajamangala University of Technology Isan Nakhon Rachasima

- Profile
- To create a ceramic vase design from inspiration of E-SAN bamboo basketry such as Fishing Trap container, Krabung and Kapha.
  - Ceramics forming technique by wheel throwing with used a local clay of Dan Kwian and wood kiln firing technique at 1,220°C.



Basketry Clay 70x25, 45x35, 18x55

Chumnong Thanavanichagul



Nationality  
Thailand

Institute  
Burapha University

- Profile
- Assistant Professor, Major Painting.
  - B.F.A. Painting (2nd hons) Silpakom University.
  - M.F.A. Painting, Graduate School, Silpakom University.
  - 3rd Prize Visakha Day, Art Cooperative League of Thailand.
  - Special Prize, 3rd Prize Stamp Design.



STREM OF RELIGION 80x60



Pisces 25x85

Chaveeporn Sungwarn



Nationality  
Thailand

Institute  
Burapha University

- Profile
- Chair of Bachelor of Fine and Applied Arts in Communication Arts and Design Program, Burapha University International College



Love flower 92.7x42

Chutima Changpum



Nationality  
Thailand

Institute  
Phuket Rajabhat University

- Profile
- I am a design instructor at Phuket Rajabhat university and independent designer with the areas of expertise in illustration, fabric design, and embroidery.

Kamolwan Patcharapornpipat Sarasuk



Nationality  
Thailand

Institute  
Dhurakij Pundit University

Profile  
• Lecturer of Fine and Applied Arts, Dhurakij Pundit University



Colorful pathways to heaven 10x15

Kanittha Puangsri



Nationality  
Thailand

Institute  
Chiang Mai Rajabhat University

Profile  
• Dr.Kanittha Puangsri  
• Lecturer of department of Art  
• Faculty of Humanities And Social Sciences



Black cats 50x65



Pier 2, Tier 2 59.4x84.1

Kamonsiri Wongmuek



Nationality  
Thailand

Institute  
Dhurakij Pundit University

Profile  
• Lecturer, Faculty of Fine and Applied Arts,  
Dhurakij Pundit University



Thai Coloration 2 59.4x84.1

Kanyaporn Kunthonsap



Nationality  
Thailand

Institute  
Nakhon Sawan Rajaphat University

Profile  
• Lecturer, Graphic Designer

Kanyakorn Chantarasakha



Nationality

Thailand

Institute

Rajamangala University of Technology Isan Nakhon Rachasima

Profile

• Lecturers



Inequality 20x20

Kim, Hyungjoo a



Nationality

Republic of Korea / USA

Institute

University of Wisconsin

Profile

- Assistant Professor, University of Wisconsin – Eau Claire
- Visiting Assistant Professor, Purdue University
- Independent Designer, Consultant
- Curator, International exhibitions, events including Looking at ASIA through 150 Asian Designers



Enjoy similarity, respect difference 59.4x84.1



The Landscape 65x85

Khan Payungphan



Nationality

Thailand

Institute

Phuket Rajabhat University

Profile

- Assistant Professor, Fine Arts Program
- Faculty of Humanities and Social Sciences
- Phuket Rajabhat University



PURPLE LOTUS 35x65

Kitti Maleephan



Nationality

Thailand

Institute

Chiang Mai University

Profile

- INSTRUCTOR IN PAINTING SECTION, FACULTY OF FINE ARTS, CHIANG MAI UNIVERSITY

**Kittithat Srifar**



Nationality  
Thailand

Institute  
Rajamangala University of Technology Rattanakosin

Profile  
• Lecturer



Koh Munnork Wreck Dive

**Kriangkrai Kongkhanun**



Nationality  
Thailand

Institute  
Sripatum University

Profile  
• Assistant Dean for Academic Affairs, School of Digital Media, Sripatum University



The golden flower, Chapter 2 Inside Out 60x90



Southern Thai Batik Silk Dress No.1 80x120

**Koraklod Kumsook**



Nationality  
Thailand

Institute  
Srinakharinwirot University

Profile  
• Fashion Lecturer



Flexible Journey Bag 55x300

**Kriangsak Khiaomang**



Nationality  
Thailand

Institute  
Burapha University

Profile  
• Assistant Prof, Department of Product Design, Faculty of Fine and Applied Arts, Burapha University, Thailand  
• AUG 16-19/2018 BURAPHA INNOVATION FAIR 2018, Faculty of Faculty of Information Science, Burapha University, Thailand  
• MAR3-11/2018 ANBD 2018 Special Exhibition at Munich, Germany, Five Continents Museum (Museum Fünf Kontinente), Munich, Germany  
• FEB5-9/2018 2018 The Korea Association of Art & Design International Art & Design Invitation Exhibition <Thailand Burapha University>, Exhibition Hall, Faculty of Fine and Applied Arts, Burapha University, Thailand  
• NOV17-21/2017 International Art & Design Exhibition 2017, Namseoul University, Cheonan, Chungsheongnam-do, Korea

**Kritsada Sangseubchart**



Nationality  
Thailand

Institute  
Burapha University

Profile

- M.F.A Visual Art-Modern Art Srinakharinwirot University Bangkok Thailand
- Asst.Prof.Computer Graphic Visual Communication Design Faculty of fine and applied arts Burapha University Bangsaen Chonbuir
- 3rd Prize of 8th Great Oriental Art Exhibition Dali University P.R.China 6-10 June 2008
- The Great Teacher in VR Animation technology from "VR The Future" Kunming City at Yunan Arts University China 2016
- Executive Planners "On the Stream-The Third Kunming Fine Arts Biennale 2016



Scene Design for VR Animation : The Impressions of Bangsaen Beach 59.4x34.1



Hope 33.4x24.1

**Kunyawee Phetsuk**



Nationality  
Thailand

Institute  
Sripatum University

Profile

- Lecturer at School of Digital Media, Sripatum University

**Lue.Kasamakamin Bhumitadadech**



Nationality  
Thailand

Institute  
Vajiravudh College

Profile

- Student



AQUAMAN CASTLE 59.4x34.1



Your Glass, Our Earth 15x40

**Montita Phrammanachot**



Nationality  
Thailand

Institute  
Phuket Rajabhat University

Profile

- Lecturer in Product Design Department, Faculty of Science and Technology, Phuket Rajabhat University.

Naddawadee Boonyadacho



Nationality  
Thailand

Institute  
Srinakharinwirot University

Profile  
• Lecturer at Srinakharinwirot University.



Dararat 19x11x2, 10x11x2



Texture Saurus 39.4x34.1

Nantiya Na nongkai



Nationality  
Thailand

Institute  
Rajamangala University of Technology Isan  
Nakhon Rachasima

Profile  
• Plush Toy Design  
• Fashion Design

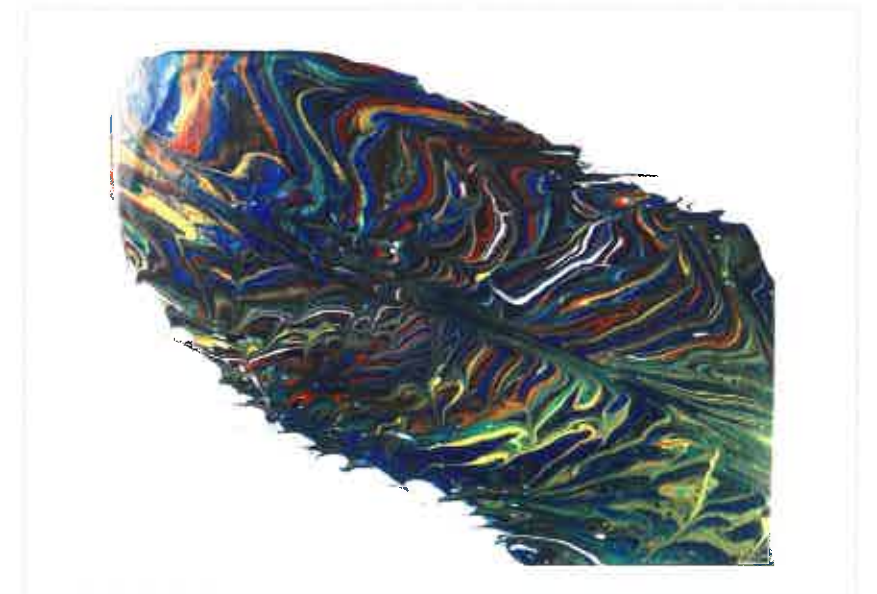
Napon Kunanitisarn



Nationality  
Thailand

Institute  
Sripatum University

Profile  
• The Assistant Dean for Student Affairs is responsible for leading the University recruitment efforts, developing student engagement strategies to aid retention, providing orientation and enrollment sessions, and serving on university committees.  
• Analyzing and presenting student data in reports and other venues are required. Further, the Assistant Dean will supervise the staff of the Center for Student Affairs, including professional academic advisors, a licensure officer, a recruitment coordinator, and office support staff, as well as graduate assistants and undergraduate student workers.



The Feather 30x30



Hidden Story 59.4x84.1

Nattakamol Toongsuwan



Nationality  
Thailand

Institute  
Sripatum University

Profile  
• Lecturer at School of Digital Media, Sripatum University



Nattapon Pichairat



Nationality

Thailand

Institute

Sripatum University

Profile

• Lecturer at School of Digital Media, Sripatum University



Flower Ornament 53.4x84

Nattheeranon Rodchuen



Nationality

Thailand

Institute

Nakhon Sawan Rajabhat University

Profile

• Instructor, product Design



Decorate 50x30



KHIT 13x43

Nattarika Kongsaku



Nationality

Thailand

Institute

Rajamangala University of Technology Isan Nakhon Rachasima

Profile

• Lecturer



Fear 38x56

Paitoon Thongdee



Nationality

Thailand

Institute

Phuket Rajabhat University

Profile

• Lecturer, Sculpture

**Panuwat Sangiam**



Nationality  
Thailand

Institute  
Phuket Rajabhat University

Profile:

- Assistant Professor, Visual Arts Programs, Faculty of Humanities and Social Sciences, Phuket Rajabhat University.
- B.F.A. (Painting) (Second class honours) Faculty of Fine & Applied Arts, Burapha University.
- M.F.A. (Visual Arts : Modern Arts) Faculty of Fine & Applied Arts, Srinakharinwirot University.
- Ph.D. (Visual Arts and Design) Faculty of Fine & Applied Arts, Burapha University.



Bondage's mind 80x100



Legends of Shetland 50.4x34.1

**Panuwat Sitheechoke**



Nationality  
Thailand

Institute  
Sripatum University

Profile:

- Lecturer at School of Digital Media, Sripatum University

**Papattaranan Kunphunsup**



Nationality  
Thailand

Institute  
Burapha University

Profile:

- Lecturer



Being in the World We Share Full HD, 20 minutes



My King. (Kingrama 9) 14x60x10

**Pasakon Sangsawang**



Nationality  
Thailand

Institute  
Burapha University

Profile:

- Instructor, Department of Painting.

**Pasin Viengkaw**

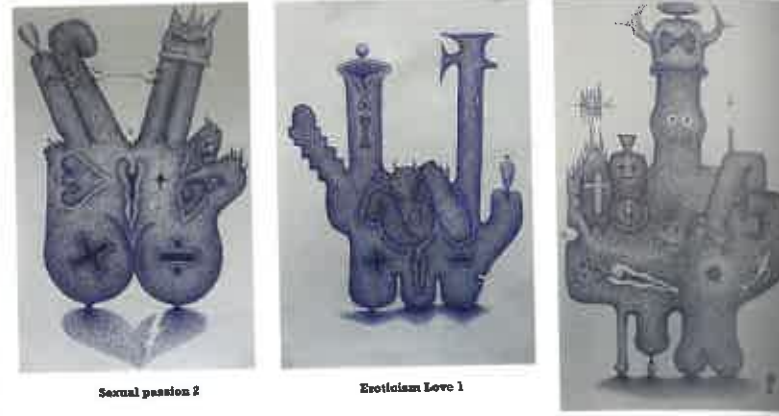


Nationality  
Thailand

Institute  
Rajabhat University

**Profile**

- Mr.Pasin Viengkaw. I graduate in M.F.A Visual Arts, Mahasarakham University in Thailand. I am a lecturer of Visual Arts at Udonthani Rajabhat University in Thailand. My famous art exhibition such as
- 2014 - The 20th Faculty of Fine and Applied Arts Anniversary, Khonkaen University, Khonkaen Province.
- 2016 - The 9th Silpakom University International Conference on Academic Research and Creative Arts: Integration of Art and Science, Silpakom University, Sanam Chandra Palace, Nakhon Pathom Province.
- 2016 - The His Majesty the King Bhumipol Adulyadej will remain in Thai people's heart forever, Central Plaza Udonthai , Udon Thani Province.



Size: 42 x 30 cm.  
Technique: Ballpoint pen techniques  
Concept  
The sexuality is so delicate, to be happy about sex it is an ordinary case. Sex-happiness have different tastes. A passionate sex in body shape if you are no restraint, it may cause divorce in your spouse life. But if you are a pleasure-loving person and a single person, like being alone let your instinct take you to the sexual happiness.

Sexual passion 2 42x30



illusion of fact 59.4x84.1

**Patana Duangpatra**



Nationality  
Thailand

Institute  
Assumption University

**Profile**

- Lecturer at Assumption University, Albert Laurence School of Communication Arts, Department of Digital Media Communication.

**Pattarasak Simhong**



Nationality  
Thailand

Institute  
Rajmangala University of Technology Isan Nakhon Rachasima

**Profile**

- Lecturer



Astronaut 42x59.4



A window of civilization 59.4x84.1

**Peerapong Sutinrerak**



Nationality  
Thailand

Institute  
Sripatum University

**Profile**

- Lecturer at School of Digital Media, Sripatum University

**Petronio Bendito**



Nationality  
Brazil / USA

Institute  
Purdue University

Profile  
• Associate Professor of Visual Communication Design



Similarities and Differences: Together We Flourish 21x29.7



Gayre' Mermaid Life on beach 53.4x94.1

**Phikkanet Isaramongkolrak**



Nationality  
Thailand

Institute  
Rajamangala University of Technology Isan Nakhon Rachasima

Profile  
• Lecturer, Department of Industrial of product Design  
• Faculty of fine and Industrial design  
• Rajamangala University of Technology Isan

**Pisit Klangkool**



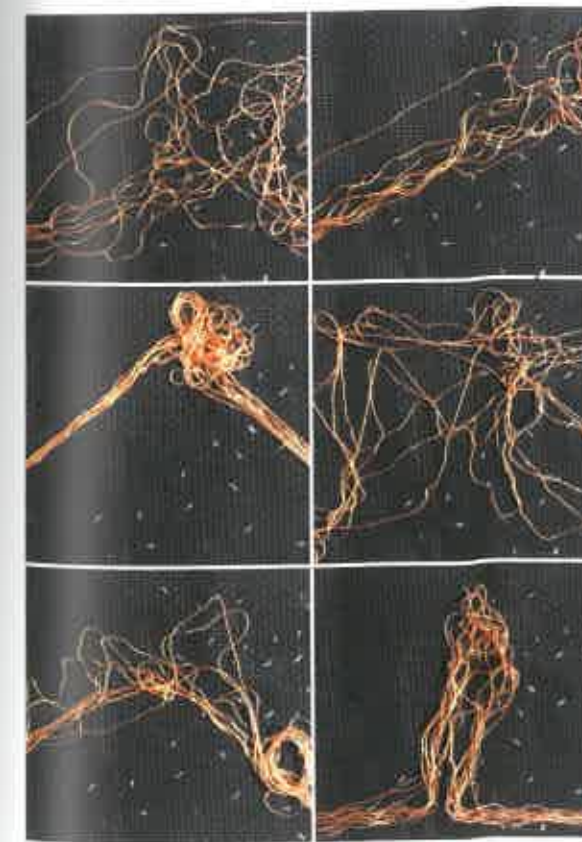
Nationality  
Thailand

Institute  
Rajamangala University of Technology Isan Nakhon Rachasima

Profile  
• Lecturer, Department of Industrial of product Design  
• Faculty of fine and Industrial design  
• Rajamangala University of Technology Isan



Stalk Stool Chair 40x40x52, 40x40x55



Start from the Same Point 45x90

**Pitsamai Arwakulpanich**



Nationality  
Thailand

Institute  
Chiang Mai University

Profile  
• Instructor, Researcher and Designer

**Pornpimon Sakda**



Nationality  
Thailand

Institute  
Burapha University

Profile

- I am a lecturer of digital media design at Faculty of Architecture and Design, Rajamangala University of Technology Rattanakosin, Nakhon Pathom, Thailand



Visual Culture Design for Folk Museum in Southern Thailand 50x70

**Poyluang Bunjaroen**



Nationality  
Thailand

Institute  
Rajamangala University of Technology Isan Nakhon Rachasima

Profile

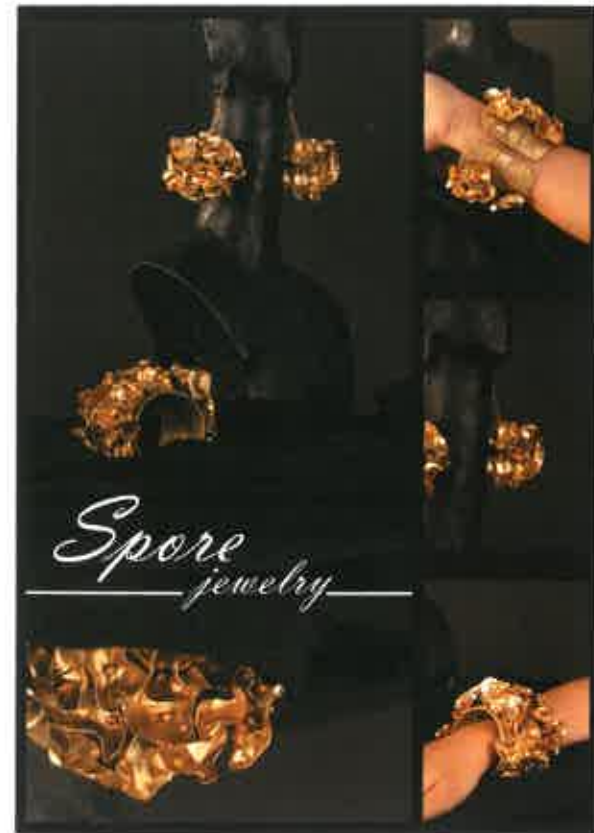
- Lecturer



MUDMEE-SILK



Mudmee-Silk 30x10



Spore jewelry Assemble 3 Piece,  
Necklace 9x50x8, Earring 7x10x7, Bracelet 10x9x6.5

**Porntip Prayutte**



Nationality  
Thailand

Institute  
Rajamangala University of Technology Isan Nakhon Rachasima

Profile

- 2018 : International Art Exchange Exhibition 2018, Livein Gallery, Busan, South Korea
- 2018 : International Art and Design Invitation Exhibition, Burapha University, Chonburi Thailand.
- 2016 : Exhibition "Inventions and Innovations for the Community" National Research Council of Thailand (NRCT), Ubon Ratchathani Rajabhat University, Thailand.



Line and Structure 79.2x59.4

**Prasitchai Jirapasittinon**



Nationality  
Thailand

Institute  
Silpakorn University

Profile

- Instructor

**Pratana Jirapasittinon**

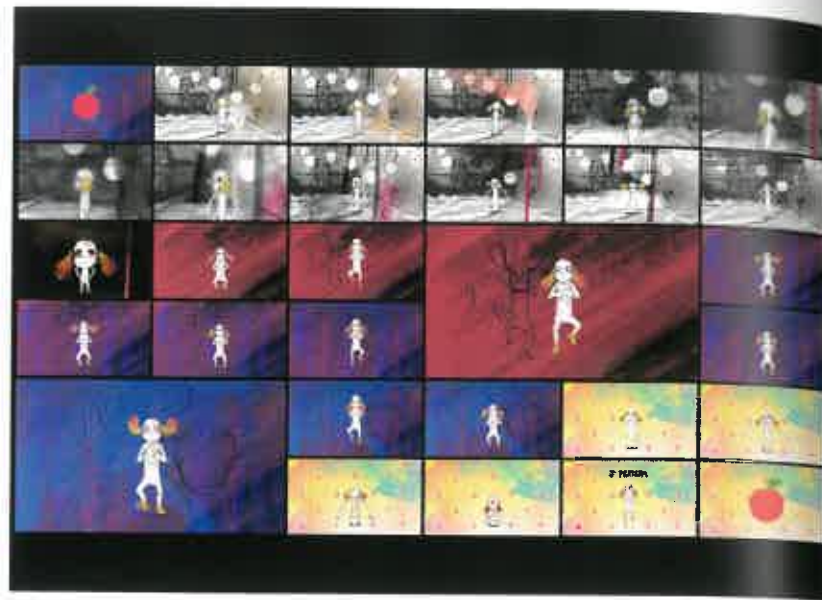


Nationality  
Thailand

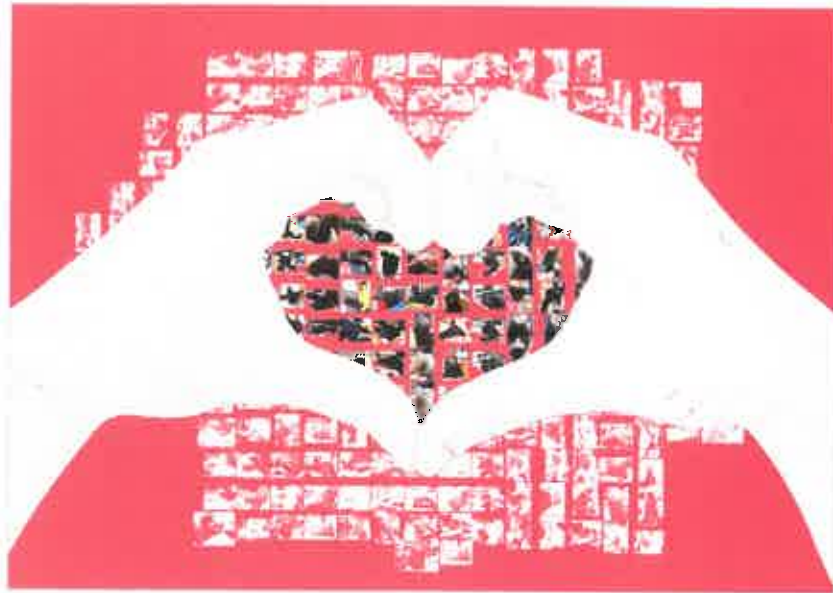
Institute  
Sripatum University

Profile

- Lecturer at School of Digital Media, Sripatum University



Symptomatic Dance 59.4x34.1



Vision of Love 59.4x34.1

**Premwadee Vinijchayakul**



Nationality  
Thailand

Institute  
Sripatum University

Profile

- Lecturer at School of Digital Media, Sripatum University

**Racha Thongphak**



Nationality  
Thailand

Institute  
Rajamangala University of Technology Isan Nakhon Rachasima

Profile

- Lecturer



The design was inspired by the local Isan, Thailand, traditional patterns. The book cover design is a unique design for the Isan, which is designed as a unique design by using the traditional etching fabric. This is in order to create the design as a contemporary style and use it can help Thailand to conserve the heritage of their culture for the future.

**PASSION OF ISAN**

RACHA THONGPHAK

Passion of Isan 59.4x34.1



Lucky with PI XIU 3x3, 2x2, 2x2.5

**Ramita Kittaweeyotin**



Nationality  
Thailand

Institute  
Burapha University

Profile

- Burapha University, Thailand

Ravitep Musikapan



Nationality  
Thailand

Institute  
Srinakharinwirot University

Profile

- Lecturer Fashion Design (BA. FASHION, TEXTILES AND ACCESSORIES. ) and Design Innovation (MFA.DESIGN INNOVATION) at Srinakharinwirot University , College of Creative Industry.



Menswear collection : "Himmapan forest" Mor-hom's discharge printing and technology of embroidery fabric

Safa Tharib



Nationality  
United Kingdom

Institute  
I-Shou University

Profile

- Assistant Professor at I-Shou university



Bad at Making Friends 59.4x84.1



HAPPY ELEPHANT 5x6

Rongkorn Anantasanta



Nationality  
Thailand

Institute  
Chiang Mai University

Profile

- INSTRUCTOR IN DESIGN SECTION, FACULTY OF FINE ARTS, CHIANG MAI UNIVERSITY



Buffalo#3 17x32x14

Sakesan Tonyapirom



Nationality  
Thailand

Institute  
Burapha University

Profile

- Dean, Faculty of Fine and Applied Arts

Sasirada Phanvisetsak



Nationality  
Thailand

Institute  
Rajamangala University of Technology Isan  
Nakhon Rachasima

Profile  
• Lecturer



the Beauty of Nature Through My Lens 59.4x84.1

Sittisak Rattanaprapawan



Nationality  
Thailand

Institute  
Rajamangala University of Technology Isan Nakhon Rachasima

Profile  
• PRODUCT DESIGN AND ARTTOYS



Child's Hero



So it's over? 59.4x84.1

Shin, Juyoung Annie



Nationality  
Republic of Korea / USA

Institute  
Jeonghwa Arts College

Profile  
• Jeonghwa Arts College, Department of Beauty Arts, An Assistant Professor  
• Seoul National University, Department of Textiles, Merchandising and Fashion Design (ph. D.)  
• 1st solo exhibition (CST create space, Tokyo, Japan)  
• 2nd solo exhibition (Space Duru, Seoul, Korea)



Transform 170x170x250

Sonthaya Yuakjangreed



Nationality  
Thailand

Institute  
Surindra Rajabhat University

Profile  
• Instructors in Visual Art and Design Program



Soontaree Chaleawpong



Nationality  
Thailand

Institute  
Sripatum University

Profile  
• Lecturer at School of Digital Media, Sripatum University



Mellow 60x40



Southern Thai Batik Silk Dress No.2 50x120

Suradet Teerakul



Nationality  
Thailand

Institute  
The Queen Sirikit Department of Sericulture

Profile  
• Industrial Products Designer, The Queen Sirikit Department of Sericulture

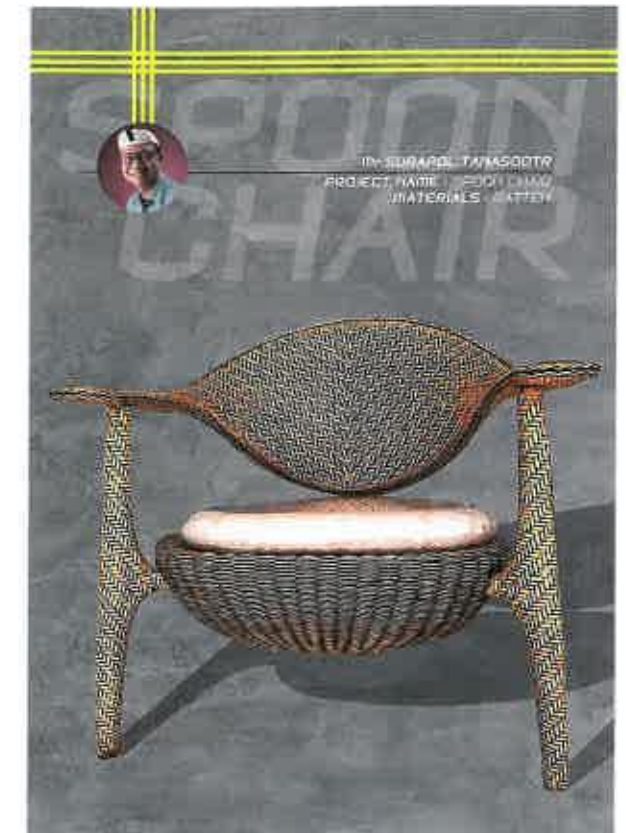
Surapol Tanasootr



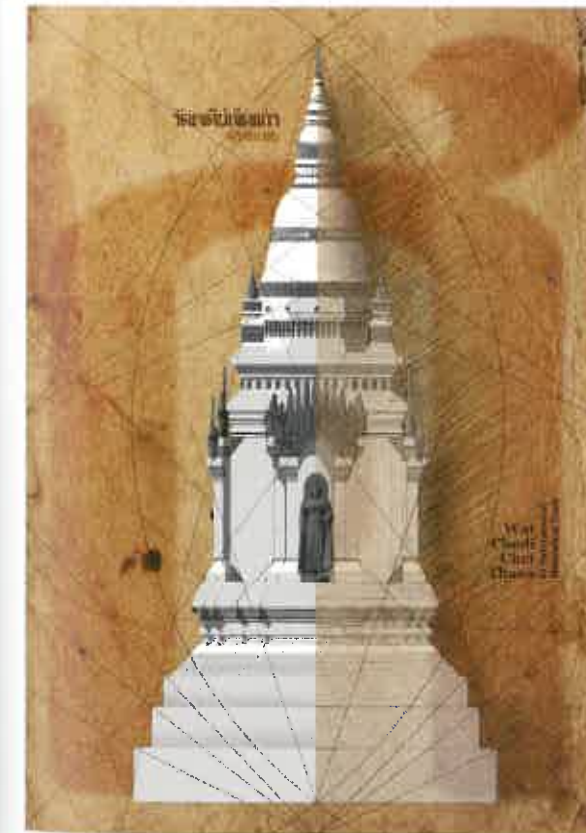
Nationality  
Thailand

Institute  
Rajamangala University of Technology Isan Nakhon Rachasima

Profile  
• FURNITURE DESIGN : PRODUCT DESIGN



SPOON CHAIR 81x62x79



Structure and Elements design of Sukhothai Stupa, idea in the style of art 60x84

Suriya Rattanawongul



Nationality  
Thailand

Institute  
Assumption University

Profile  
• Full-time instructor at department of Computer Generated Imagery, School of Communication Arts, Assumption University

Suwadee Pradab



Nationality  
Thailand

Institute  
Burapha University

Profile

- Instructor of Department Fashion clothing & Textile Design Program
- Faculty of Home Economics Technology Rajamangala University Of Technology Phra nakon



Batik ASEAN: Creative with a blending from batik's ASEAN art 45x100

Suwatchai Chaiyaphan



Nationality  
Thailand

Institute  
Rajamangala University of Technology Isan Nakhon Rachasima

Profile

- ART



Khun Pae Hui Yew 102x65



Running Girl 42x69.4

Suwapat Sowapark



Nationality  
Thailand

Institute  
Rajamangala University of Technology Isan Nakhon Rachasima

Profile

- Lecturers



Red Lotus

Teerayut Pengchai & Kajornrit Sirimark



Nationality  
Thailand

Institute  
Udon Thani Rajabhat University

Profile

- Lecturer Assistant Dr, Product Design, Udonthani Rajabhat University. Thailand
- 2009 Winner. Products Design of Sale Market Competition. Organized by Department of Industrial Promotion. Thailand
- 2008 Consolation prize. Pah-Kah-Mah Design Competition. Organized by Department of Industrial Promotion. Thailand
- 2008 Shortlist. "Dining in 2015" Design Competition by Designboom published, www.designboom.com
- Young Asian Designer DAAB Media GMBH Scheidtweilerstr. 6950933 Cologne Germany

Teparit Chaiyajan



Nationality  
Thailand

Institute  
Rajamangala University of Technology Isan Nakhon Rachasima

- Profile
- 2017 : International Art Exchange Exhibition (Korea - Thailand) ,Livein Gallery Busan,
  - 2017 : Paravion-air mail Exhibitions, The National Art Gallery, Bangkok, Thailand
  - 2018 : International Art and Design Invitation Exhibition, Burapa University, Chonburi Thailand.



Still 40x80



Chada 59,4x84

Thakorn Prathompongsonon



Nationality  
Thailand

Institute  
Sripatum University

- Profile
- Lecturer at School of Digital Media, Sripatum University

Thanapon Junkasain



Nationality  
Thailand

Institute  
Rajamangala University of Technology Rattanakosin

- Profile
- Lecturer



8 great hells 254x62

Thai Modern House

Conceptual : space and volume of traditional form

Type 1



Type 2



Thai modern house 59,4x84.1

Theerayu Srethapakdi



Nationality  
Thailand

Institute  
Burapha University

- Profile
- Interior architecture

Thidarat chumjungreed



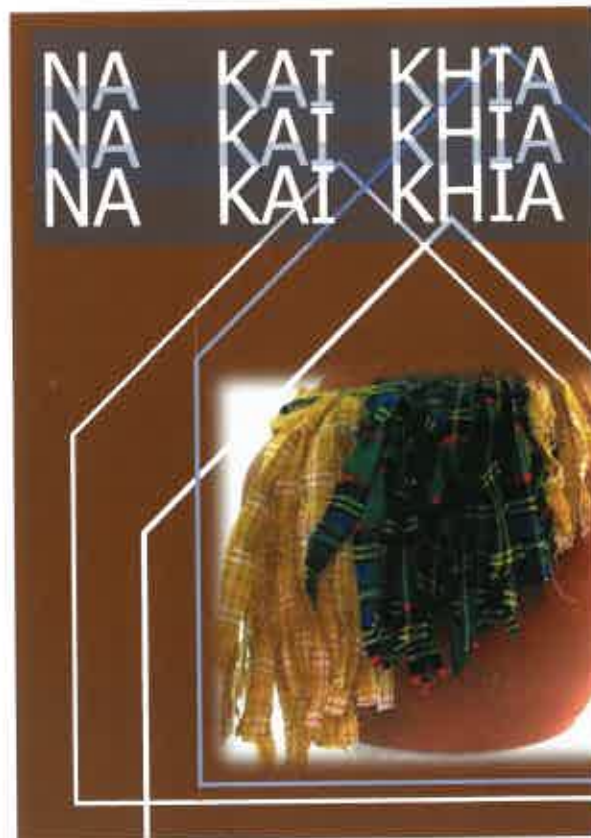
Nationality  
Thailand

Institute  
Udon Thani Rajabhat University

Profile  
• University Officer



Blend together 59.1x34



As a matter of Fact : Like that difference 20x20

Thitaporn Wanphet



Nationality  
Thailand

Institute  
Pibulsongkram Rajabhat University

Profile  
• Full time instructor at department of Industrail Product Design, Faculty of Industrial Technology Pibulsongkram Rajabhat University

Tippaluk Komolvaniij



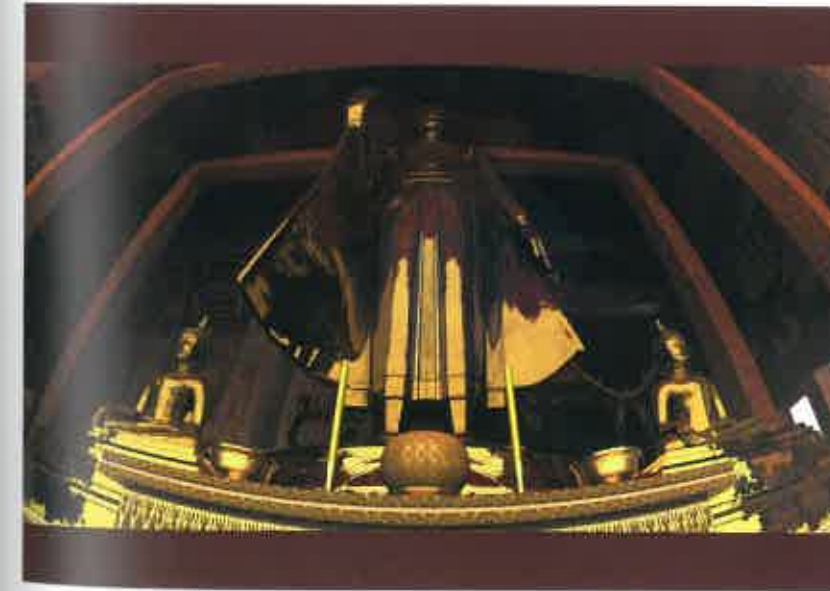
Nationality  
Thailand

Institute  
Dhurakij Pundit University

Profile  
• Fine and Applied Arts Lecturer (Computer Graphic)



Soft in Strong 59.4x84.1



Golden Buddha 59.4x34.1

Wanchalem Promsorn



Nationality  
Thailand

Institute  
Assumption University

Profile  
• Lecturer

Warakorn Chaitiamvong



Nationality  
Thailand  
Institute  
Sripatum University

Profile  
Lecturer at School of Digital Media, Sripatum University



Isabelline: A whiter shade of pale 59.4x84.1

Wichai Yothawong



Nationality  
Thailand  
Institute  
Sripatum University

Profile  
Lecturer at School of Digital Media, Sripatum University



Moments 59.4x84.1



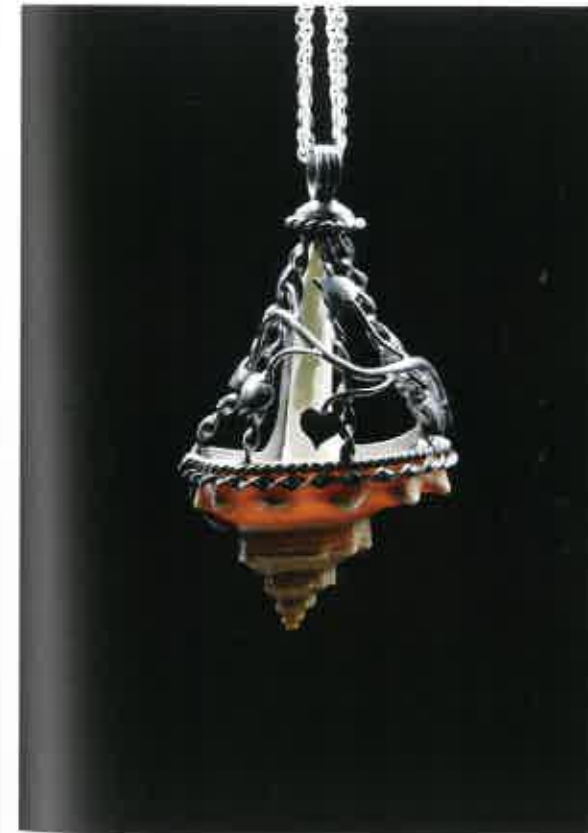
Niyay Jeen Typeface Design 59.4x84.1

Weeraphat Suteerangkul



Nationality  
Thailand  
Institute  
Sripatum University

Profile  
Head of Graphic Design Department School of Digital Media Sripatum University  
International Art&Design Invitation Exhibition 2018, Burapha University.  
6th International Contemporary Miniprint of Kazanlak 2018, Bulgaria.  
PMAC 2015 World Art Contest, Mahidol University.  
Miniprint International 2014 fiat ars, pereat mundus, Argentina.



Nature from Shell 5x3x8

Worachai Roubroumlert



Nationality  
Thailand  
Institute  
Burapha University

Profile  
Graduated M.F.A jewelry design from Sinlapakorn university, Thailand.  
Served as a lecturer of Jewelry Design Department at Burapha University Chanthaburi campus and Researchers focus on developing jewelry design.

Yuwadee Thong-on



Nationality

Thailand

Institute

Nakhon Sawan Rajabhat University

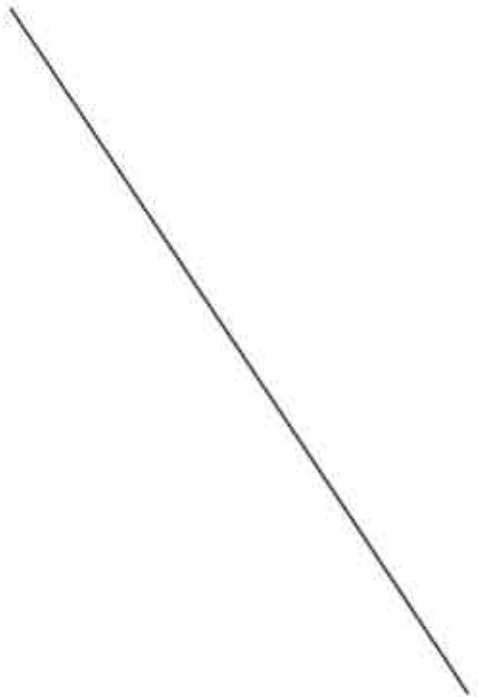
Profile

• Instructor, Silversmith

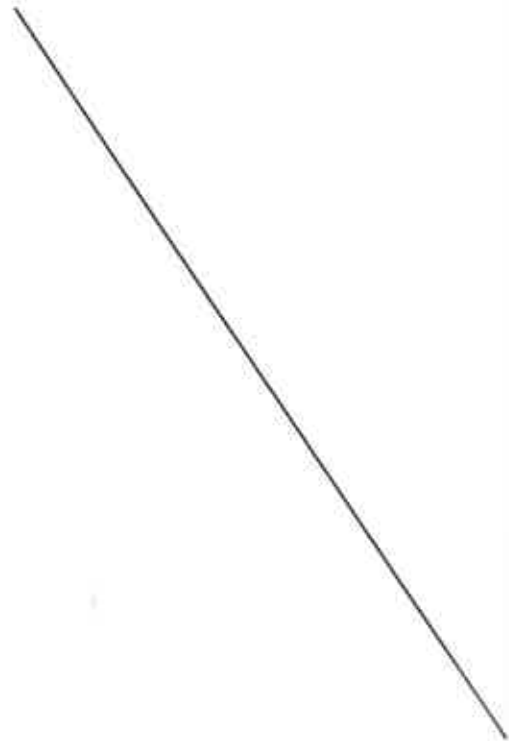


Brighten Dark 2.30x2.30x2.30





**This exhibition is validated  
by peer review of the committee**



Kim, Jungsuk	Hongik University
Kim, Sunghee	Incheon University
Ko, Gyeongho	Hongik University
Ko, Bohyeong	Hanyang University
Kim, Sanggyu	Seoul National University of Science and Technology
Kim, Hyeongjong	Namseoul University
Park, SoungChuel	Baekseok University
Park, Jungwon	Seoul Women's University
Back, Gyeongchan	Seoul National University
Woo, Hyerin	Urban Aesthetics Research Institute
Cho, Hyeyeong	Korea Craft & Design Foundation
Han, Gwija	Sungshin Women's University
Lee, Sukhyeon	Wongwang University
Jung, Yongjin	Kookmin University
Choi, ki	Kangwon National University
Kim, Taewan	Dongyang University
Shin, Heekyung	Sungui Women's University



2019

THE KOREA ASSOCIATION OF ART&DESIGN

# INTERNATIONAL ART&DESIGN INVITATION EXHIBITION

THAILAND BURAPHA UNIVERSITY

2019

(사)한국조형디자인협회  
태국 부라파대학교 예술대학  
국제조형디자인전

주최 및 주관 (사)한국조형디자인협회, Thailand Burapha University

발행일 2019년 2월 11일

발행인 김정석

발행처 사단법인 한국조형디자인협회

조직위원장 김정석

부위원장 김성희

운영위원장 서미영

진행 조서현, 성지은

디자인 누리아이

정가 20,000원

@copyright 2019

본 도록에 수록된 작품은 사단법인 한국조형디자인협회 및 해당 저작권자의 사전 동의 없이 이용, 전재, 복사 등 일체의 행위를 할 수 없으며, 필요한 경우에는 사전 동의를 구해야 합니다.



(사) 한국조형디자인협회

서울시 마포구 홍익로3길 20 서교프라자 523호(서교동) (사)한국조형디자인협회 사무국

Tel. 02-325-6454 Fax. 02-325-6455

www.art-design.or.kr